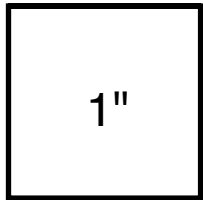


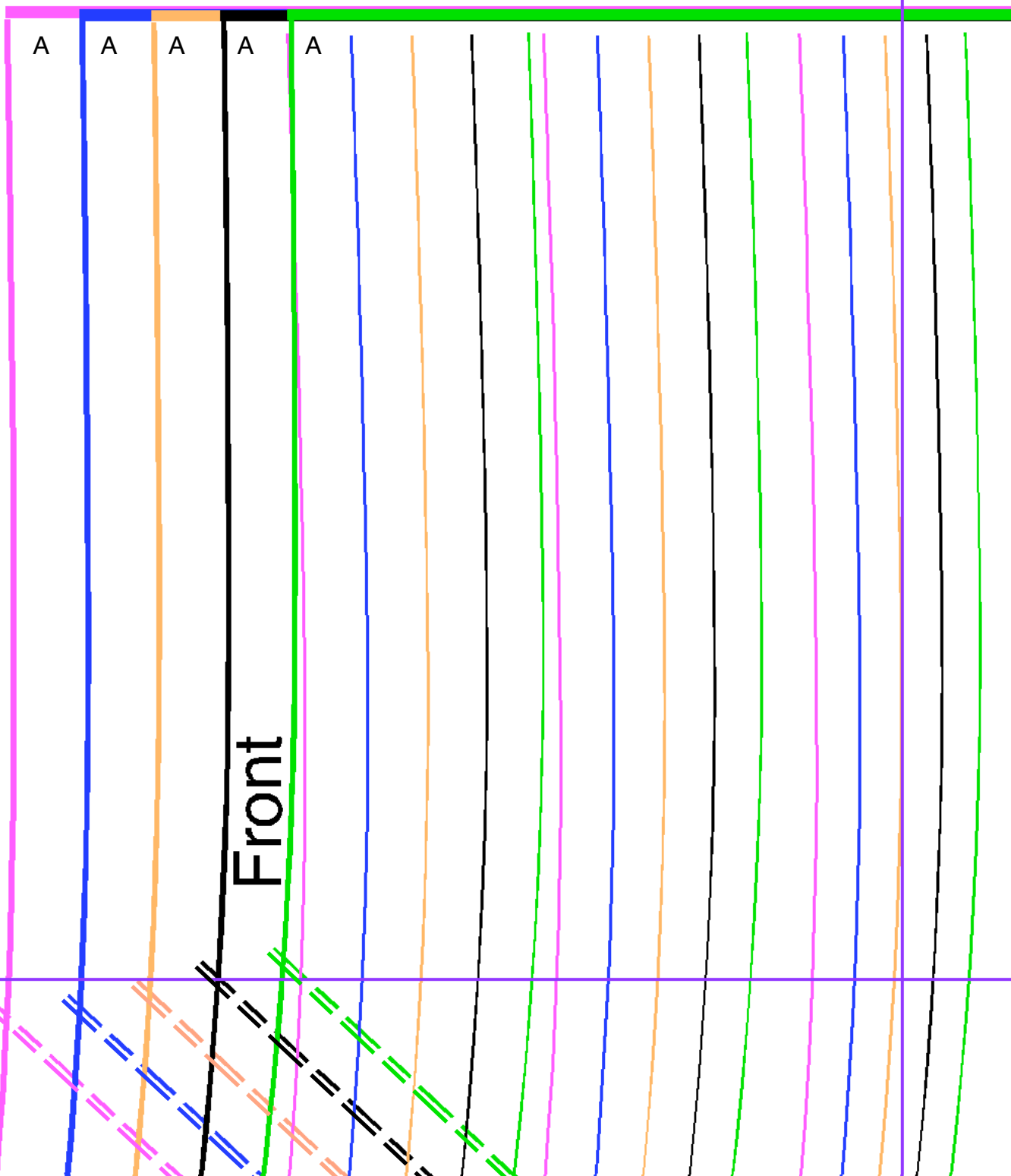
Print all 4 pages at 100%. Trim pages to the purple lines and tape together to match up the pattern piece. Pick the pattern that most closely fits you headsize. Measure around you head from under the chin and around the top and back to the same place under your chin. Once you know your finished ruffle width subtract that from the half the measurement and compair that to the length of A-B and if you need to shorten or lengthen the lappet at the double dashed line. ****See below.

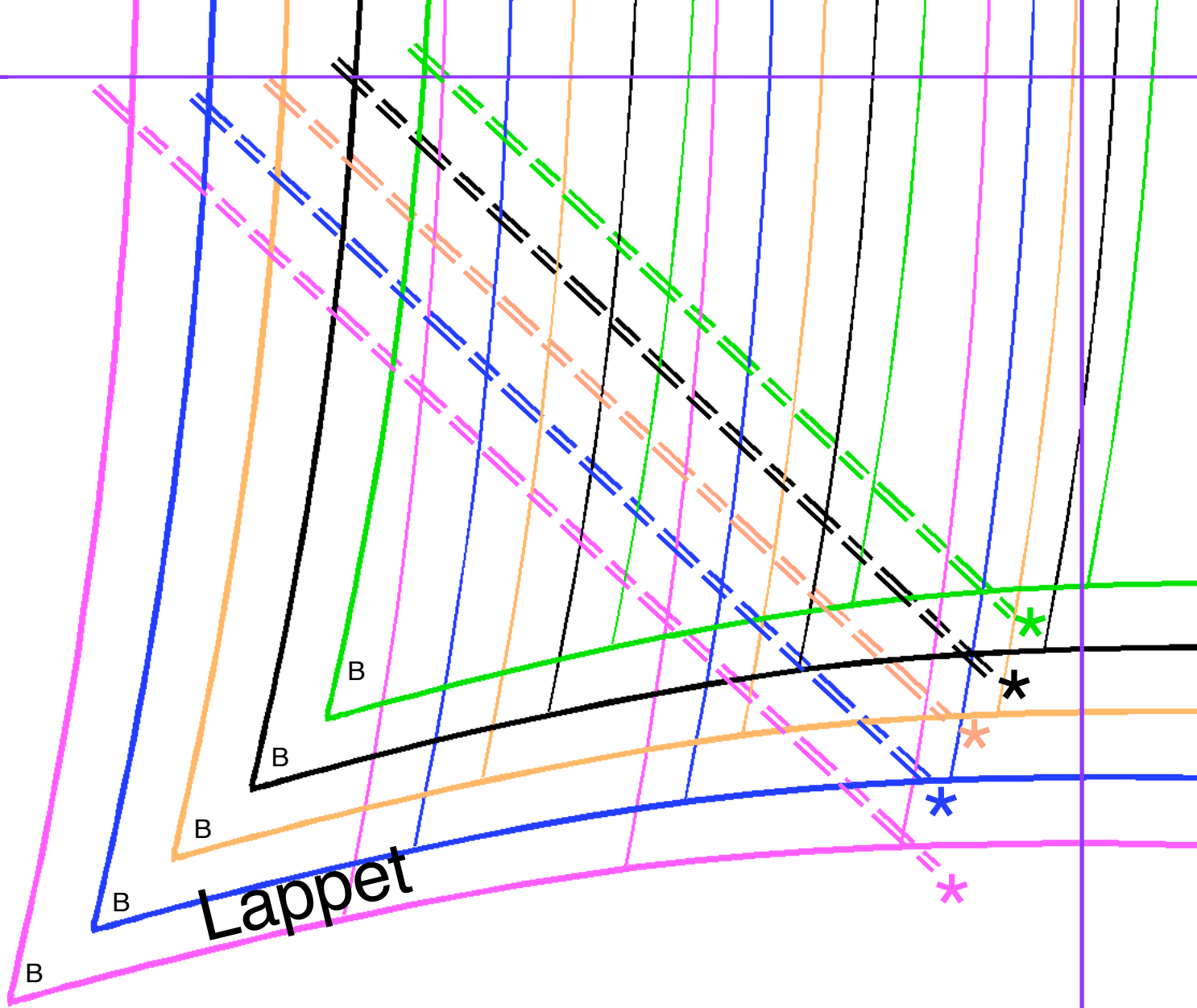


1cm



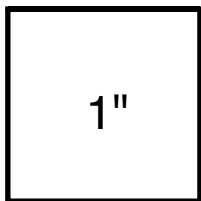
EX-L Large Med. Small EX-small





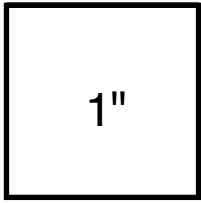
* Shorten or lengthen here, when you know how long your ruffle will be adjust the point of the lappet by altering the pattern here.

(around your head) X .5 - finished ruffle width = A to B



1cm





1cm



FOLD

Fig 20



Seam allowance 1/4"

— — — Gathering line

———— FOLD



———— Fold line for 1/4"-
1/2" ribbons

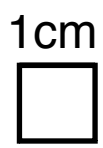
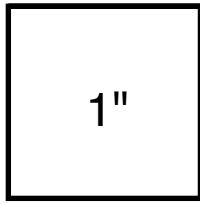
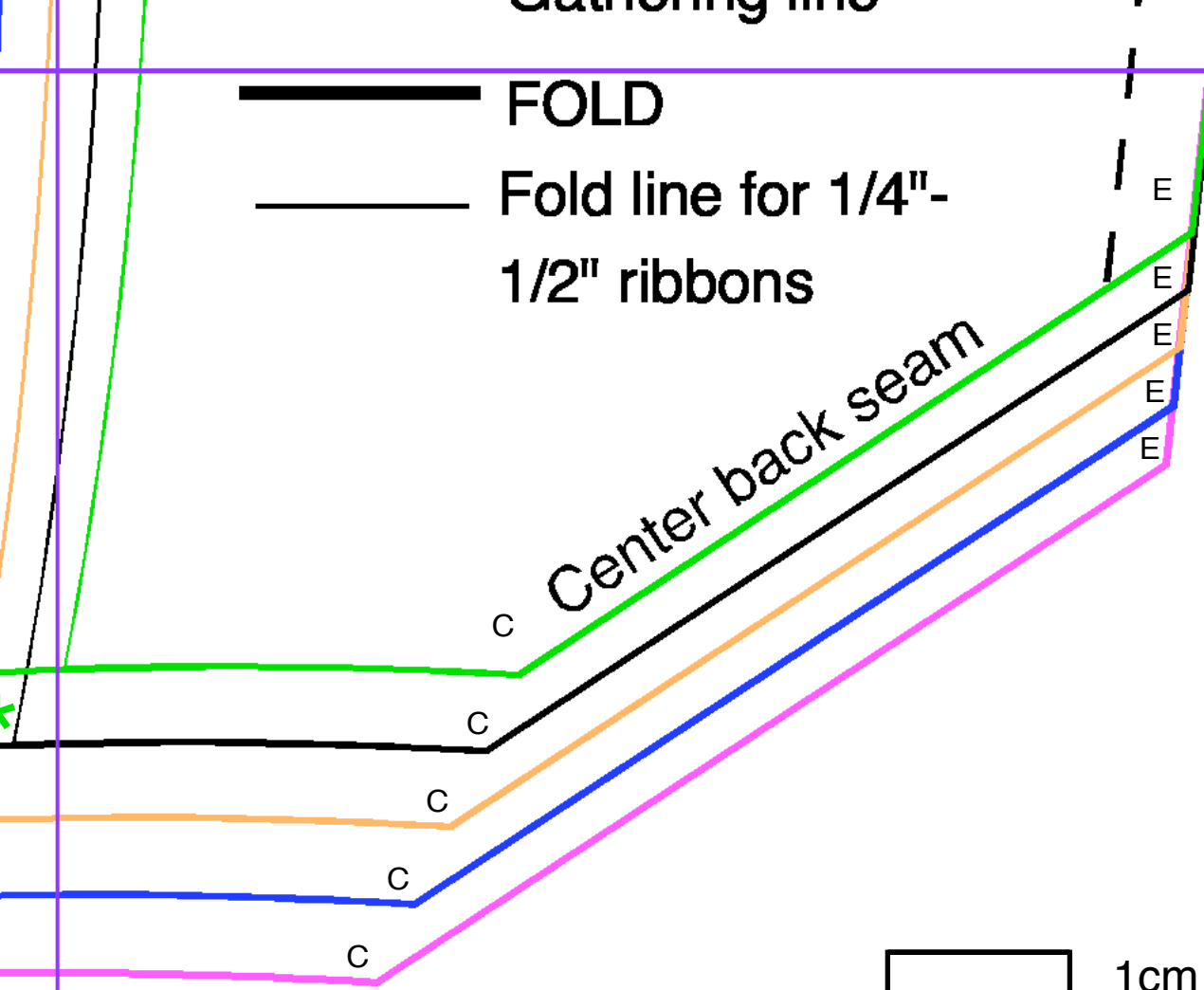
F

E

E

Gathering line

 FOLD
 Fold line for 1/4"-
 1/2" ribbons



A BONNET CAP.
 PLATE 15. FIG. 19, 20.

In making up, hem it in the front, and make three or four runners to admit a coloured ribbon, the number and breadth of these depending on fancy. They must be allowed for in cutting out, as the pattern here given is not measured for any at all. Join it from E to C, either plainly or with a piece of insertion-lace, and at the back, C B, make another string-case. The upper part, from F to E, is gathered and drawn together, and a bow put on to conceal the gathering.