

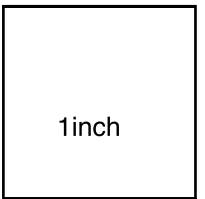
For the paper pattern print 8 and tape together along the red lines. Overlapping the red lines.

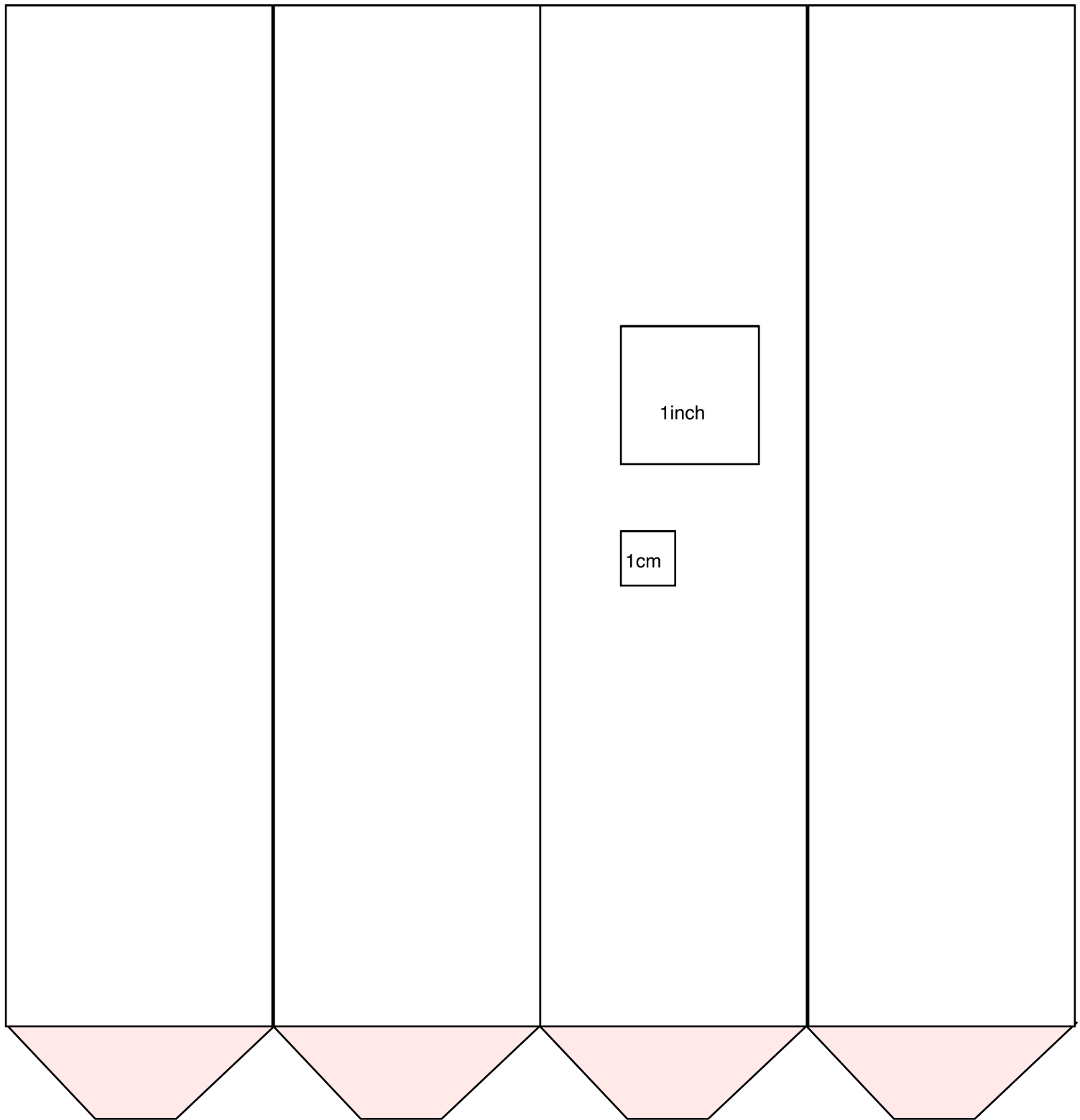
For matboard cut 2 of full pattern, one top and one bottom

You can also use your taped pattern for your fabric just add  $3/4$ " (1.84cm) on all 8 sides. Cut 2.

If you would rather print out just one and use it to mark the angles, the cuts and folds then, just cut two squares of matboard 20"X 20" or 50.8X50.8 cm.

Draw a line from corner to corner on your pieces to find the center.





Print 2, tape them together cutting away the pink trapezoid on all except for the last piece in a string. With most matboard you will be able to cut 2 pieces with 4 sections and one pink trapezoid on the end of each. To make up the 8 sides you need, in that case you can print out just 1 of this page and use it twice. It will look like this.

