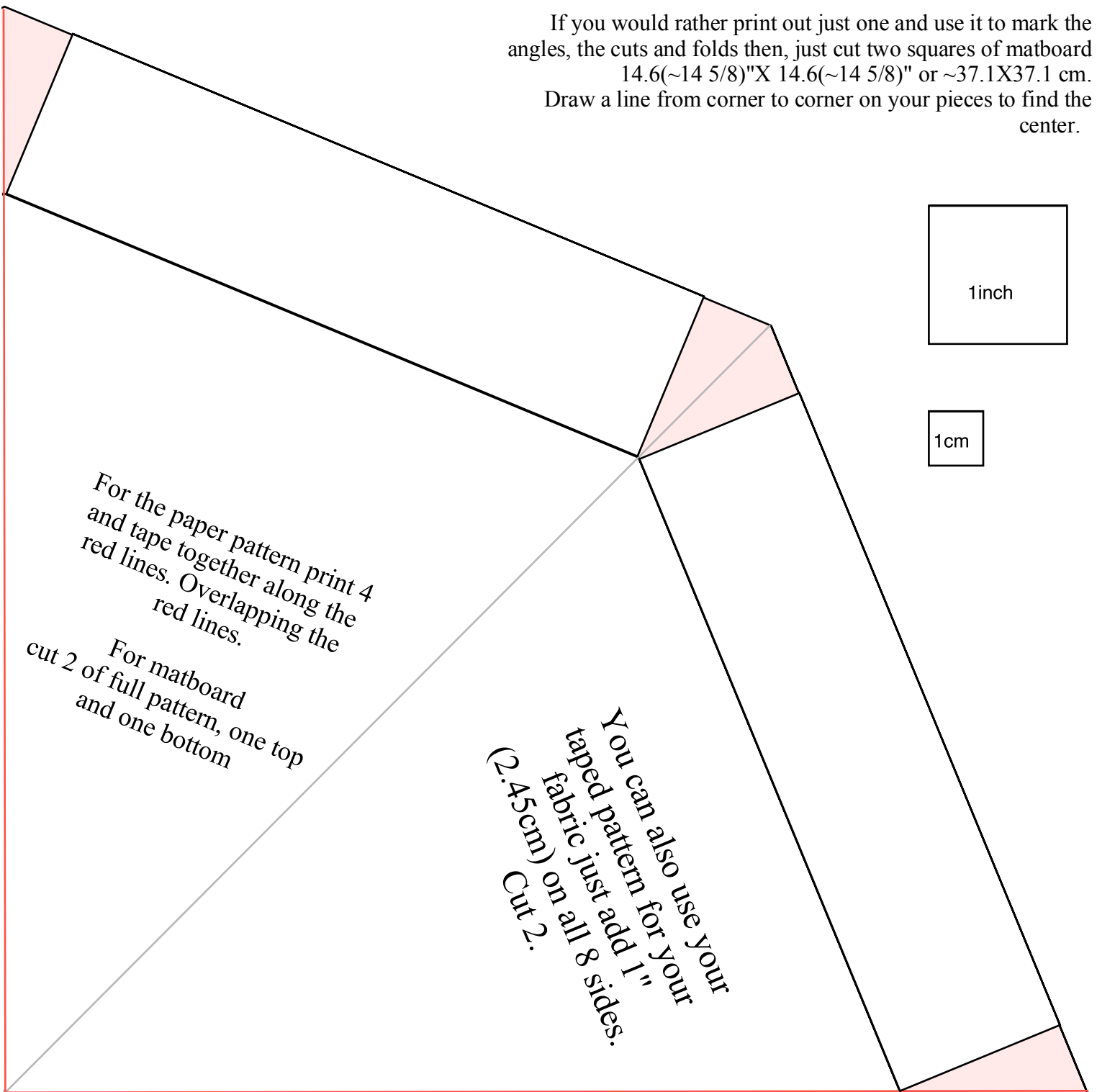


If you would rather print out just one and use it to mark the angles, the cuts and folds then, just cut two squares of matboard 14.6(~14 5/8)"X 14.6(~14 5/8)" or ~37.1X37.1 cm. Draw a line from corner to corner on your pieces to find the center.



10"

9"

8"

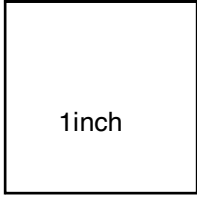
7"

6"

5"

Print 8, tape them together cutting away the pink trapezoid on all except for the last piece in a string. With most matboard you will be able to cut 2 pieces with 4 sections and one pink trapezoid on the end. To make up the 8 sides you need. In that case you can print out just 4 of this page and use it twice. It will look like this.

10"	10"	10"	10"
9"	9"	9"	9"
8"	8"	8"	8"
7"	7"	7"	7"
6"	6"	6"	6"
5"	5"	5"	5"
<p>Print 8 tape them together cutting away the pink trapezoid on all except for the last piece in a string. With most matboard you will be able to cut 2 pieces with 4 sections and one pink trapezoid on the end. To make up the 8 sides you need. In that case you can print out just 4 of this page and use it twice. It will look like this.</p>	<p>Print 8 tape them together cutting away the pink trapezoid on all except for the last piece in a string. With most matboard you will be able to cut 2 pieces with 4 sections and one pink trapezoid on the end. To make up the 8 sides you need. In that case you can print out just 4 of this page and use it twice. It will look like this.</p>	<p>Print 8 tape them together cutting away the pink trapezoid on all except for the last piece in a string. With most matboard you will be able to cut 2 pieces with 4 sections and one pink trapezoid on the end. To make up the 8 sides you need. In that case you can print out just 4 of this page and use it twice. It will look like this.</p>	<p>Print 8 tape them together cutting away the pink trapezoid on all except for the last piece in a string. With most matboard you will be able to cut 2 pieces with 4 sections and one pink trapezoid on the end. To make up the 8 sides you need. In that case you can print out just 4 of this page and use it twice. It will look like this.</p>




Print only one

© 2013 & 2020 Lynn McMasters

Top edge

## Guide for grommet holes

 Punch a hole at this position on opposite sides of the box

Punch one of this circle on one of the sides that has the hole above.



Punch one of this circle on the same side as the hole just above.