

10"

9"

8"

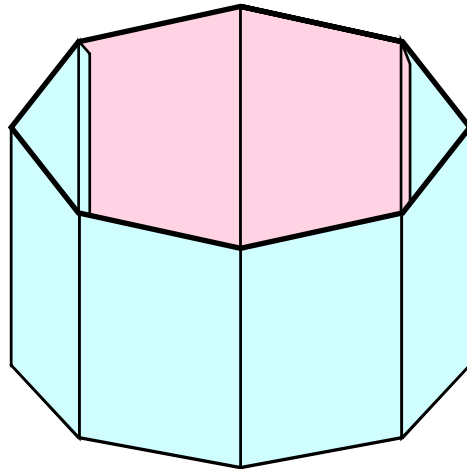
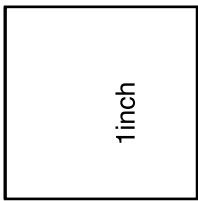
Board Pattern for Sides

7"

6"

© 2013 & 2020 Lynn McMasters

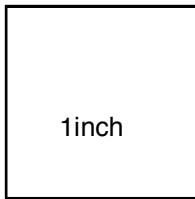
5"



End tab

Print 6 copies, cut away all but one of the end tabs. Use that to mark and cut the long 6 section part of the box sides (blue section). Then remove 4 of the sections and the the remaining two section plus tab to mark and cut the remaining sides of the box (pink section). Cut right down the center of the red line when you are taping sections together. Your 6 sections plus a tab should not be more than 40 in. or 1.016 meters.

You should be able to use a standard sheet of acid free archival board to get the 6 sides in one piece the long ways of the board. If you have another size of board and want to break it up and two sections of 4 sides that works too. Just make sure there is an end tab on each section.




Print only one

© 2013 & 2020 Lynn McMasters

Top edge

Guide for grommet holes

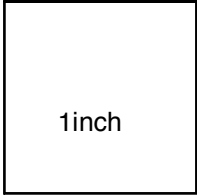
 Punch a hole at this position on opposite sides of the box

Punch one of this circle on one of the sides that has the hole above.



Punch one of this circle on the same side as the hole just above.

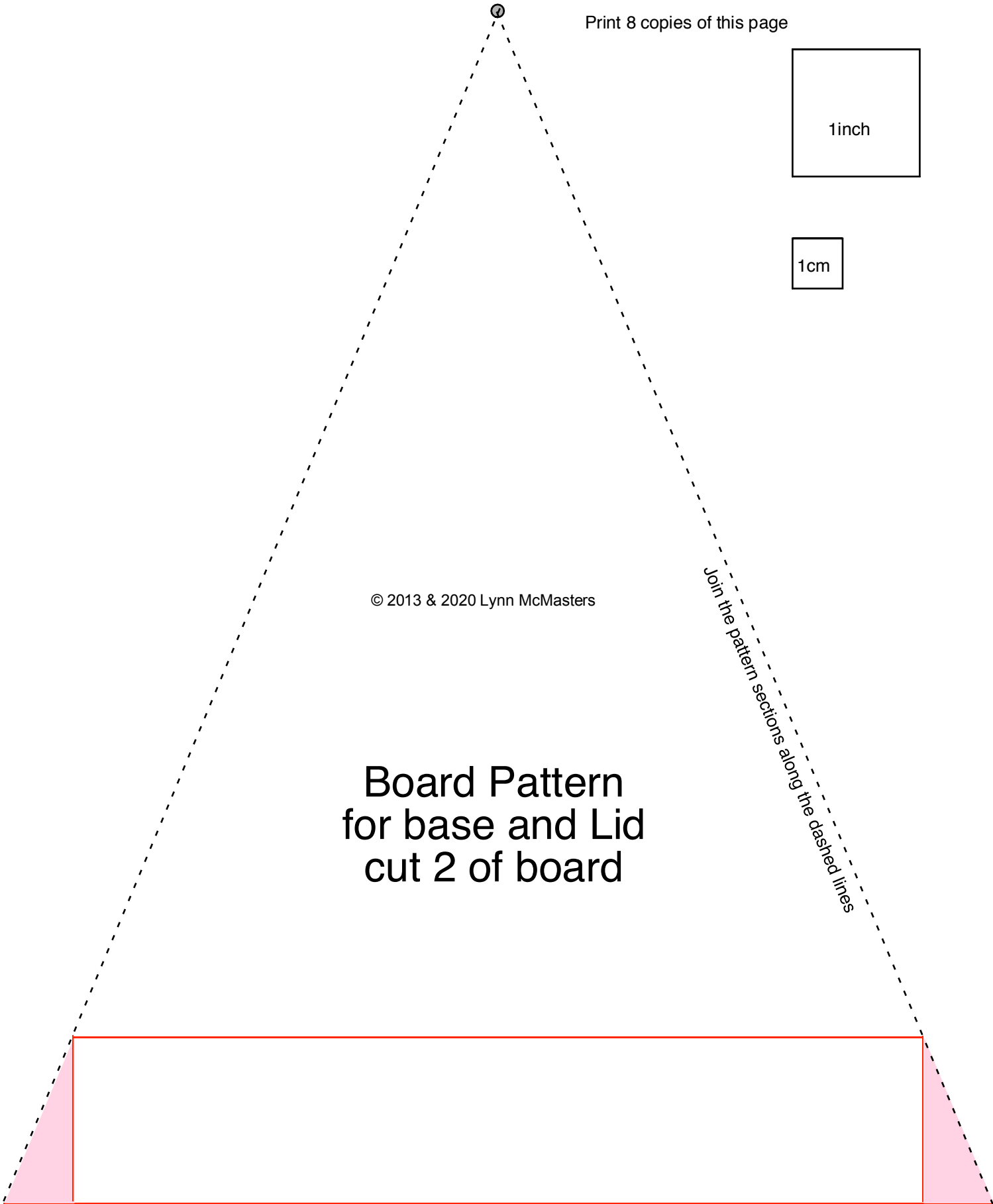
Print 8 copies of this page



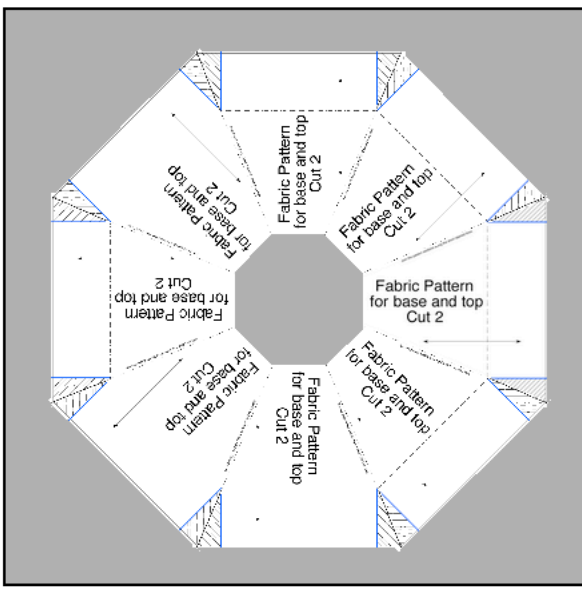
© 2013 & 2020 Lynn McMasters

Board Pattern for base and Lid cut 2 of board

Join the pattern sections along the dashed lines



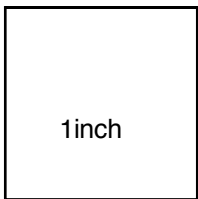
Print 8 copies of this page



When you tape this pattern together it will be missing a small octagon in the center

Join the pattern sections along the short dashed lines

Fabric Pattern for Base and Lid Cut 2 of fabric



© 2013 & 2020 Lynn McMasters

